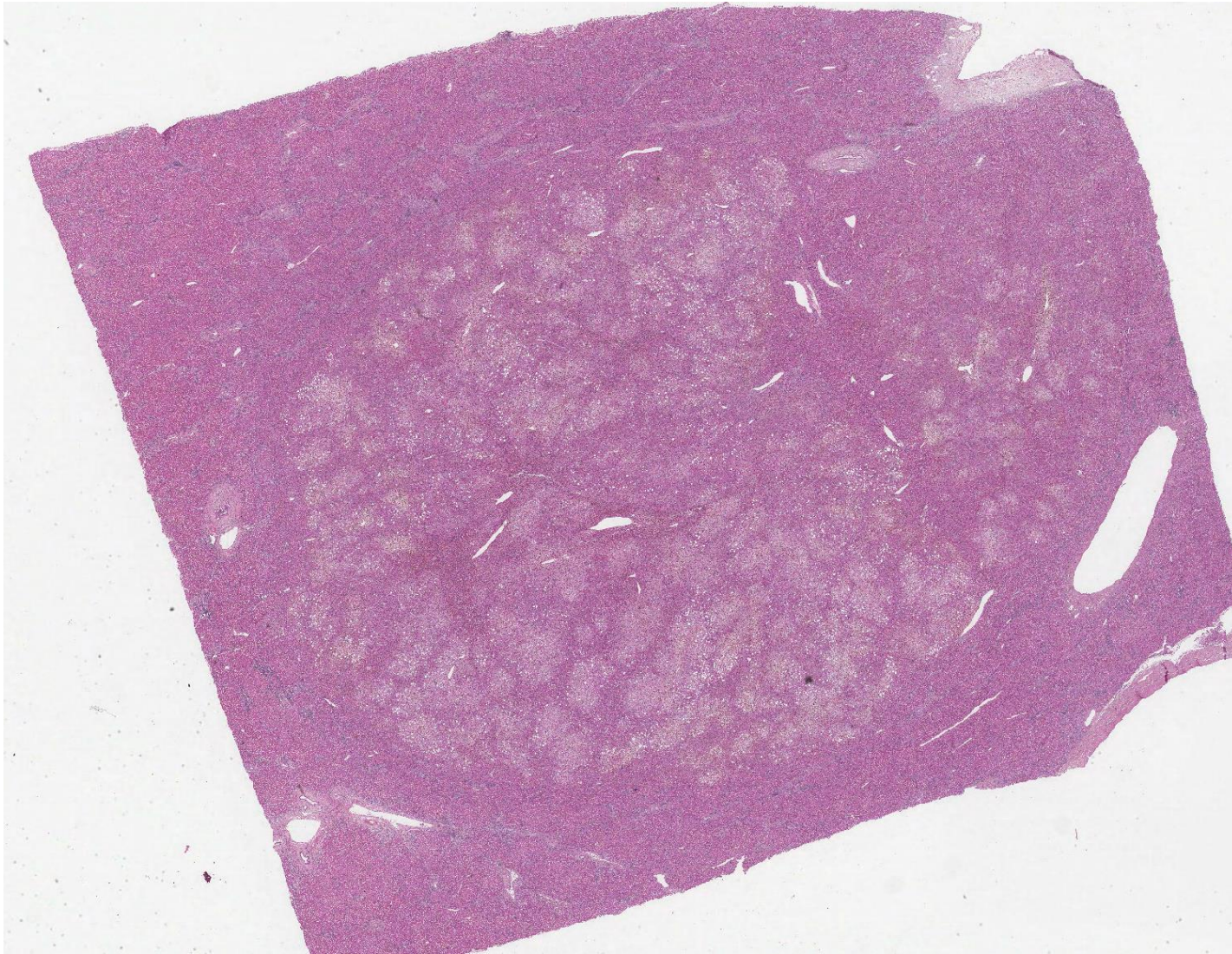


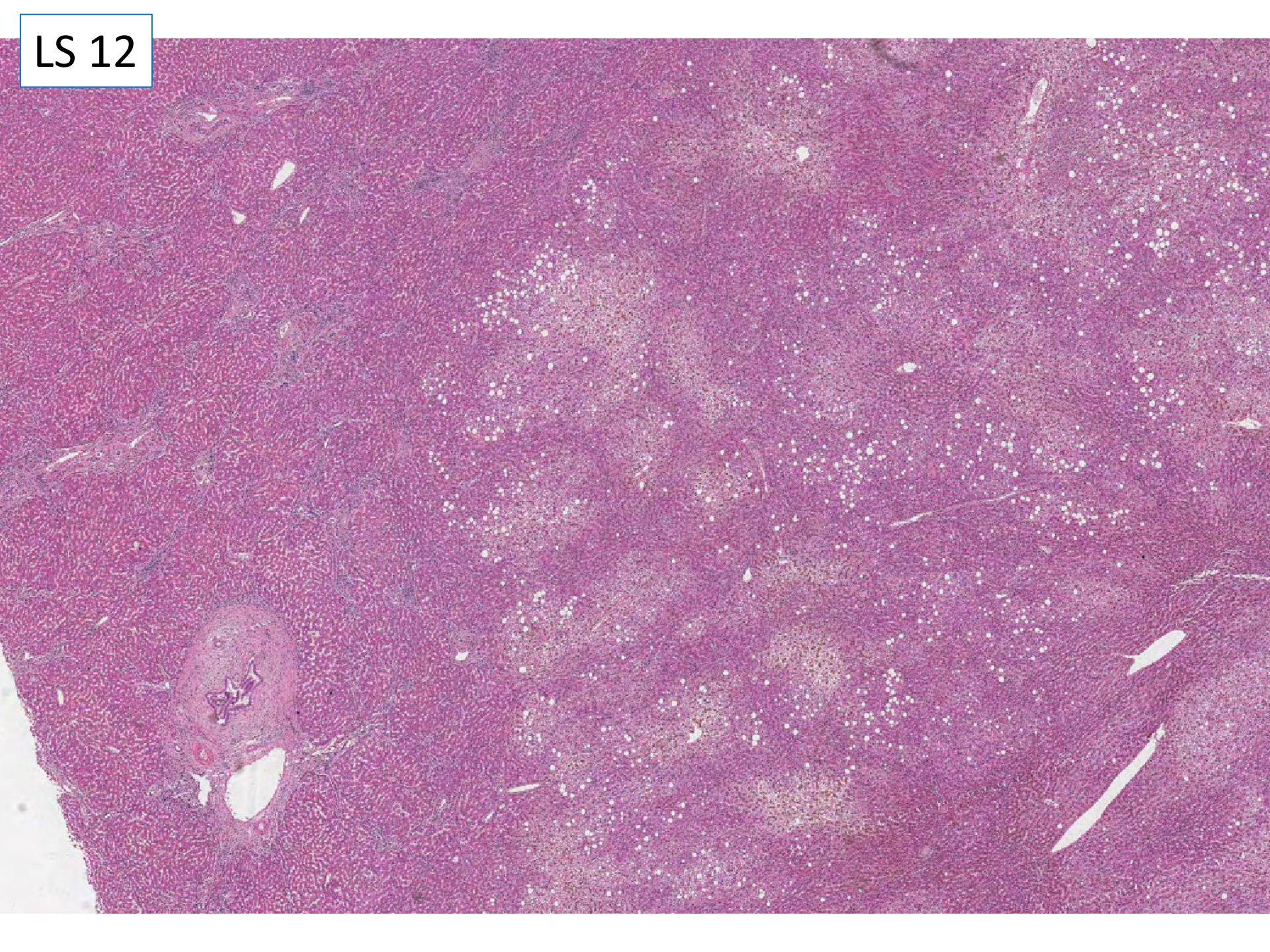
Case LS12 37 M

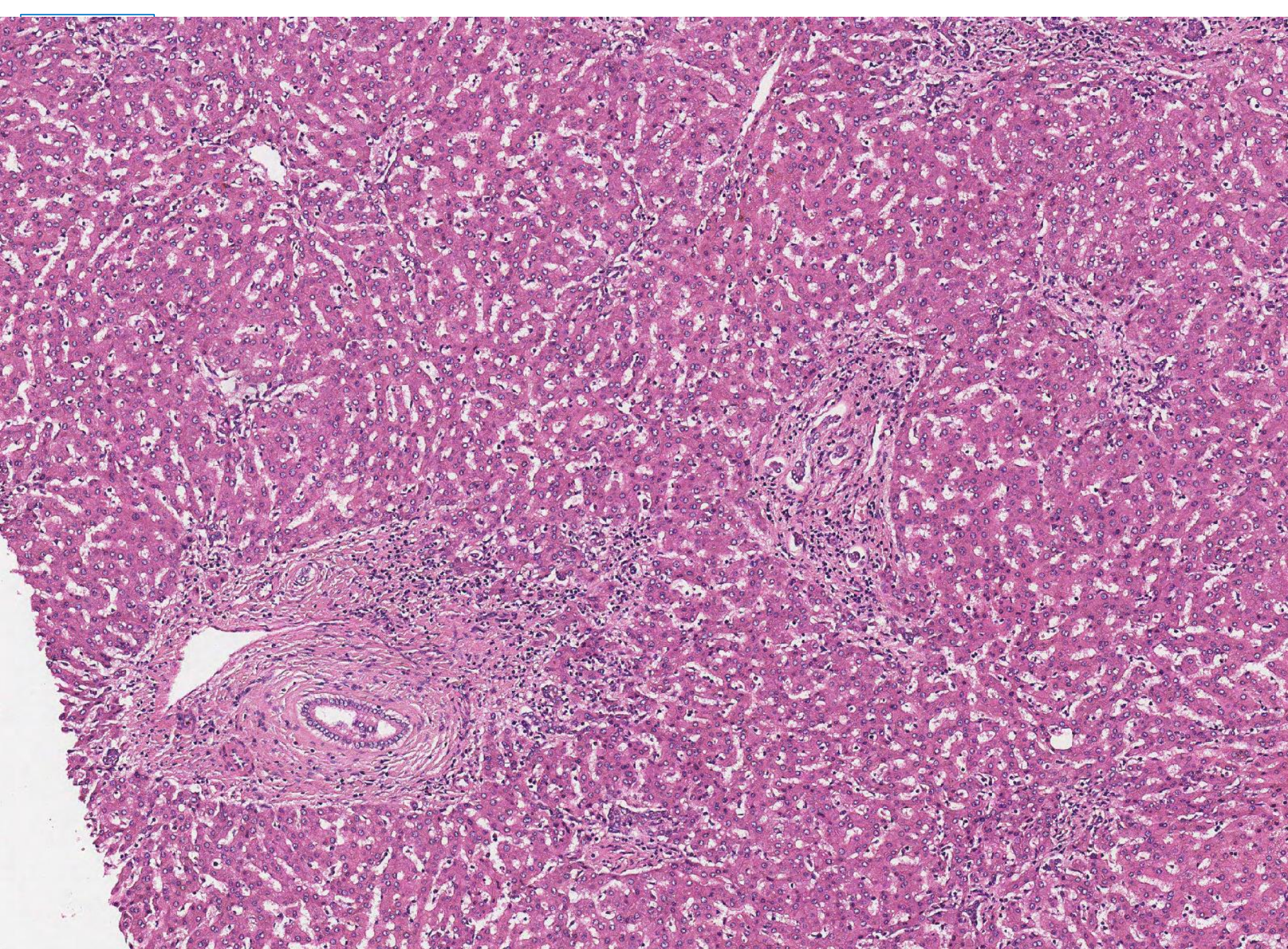
OLT for PSC

Explant liver - non nodular liver with a focal lesion in segment 7/8 which is pale in colour and measures 18 x 12 x 15 mm.

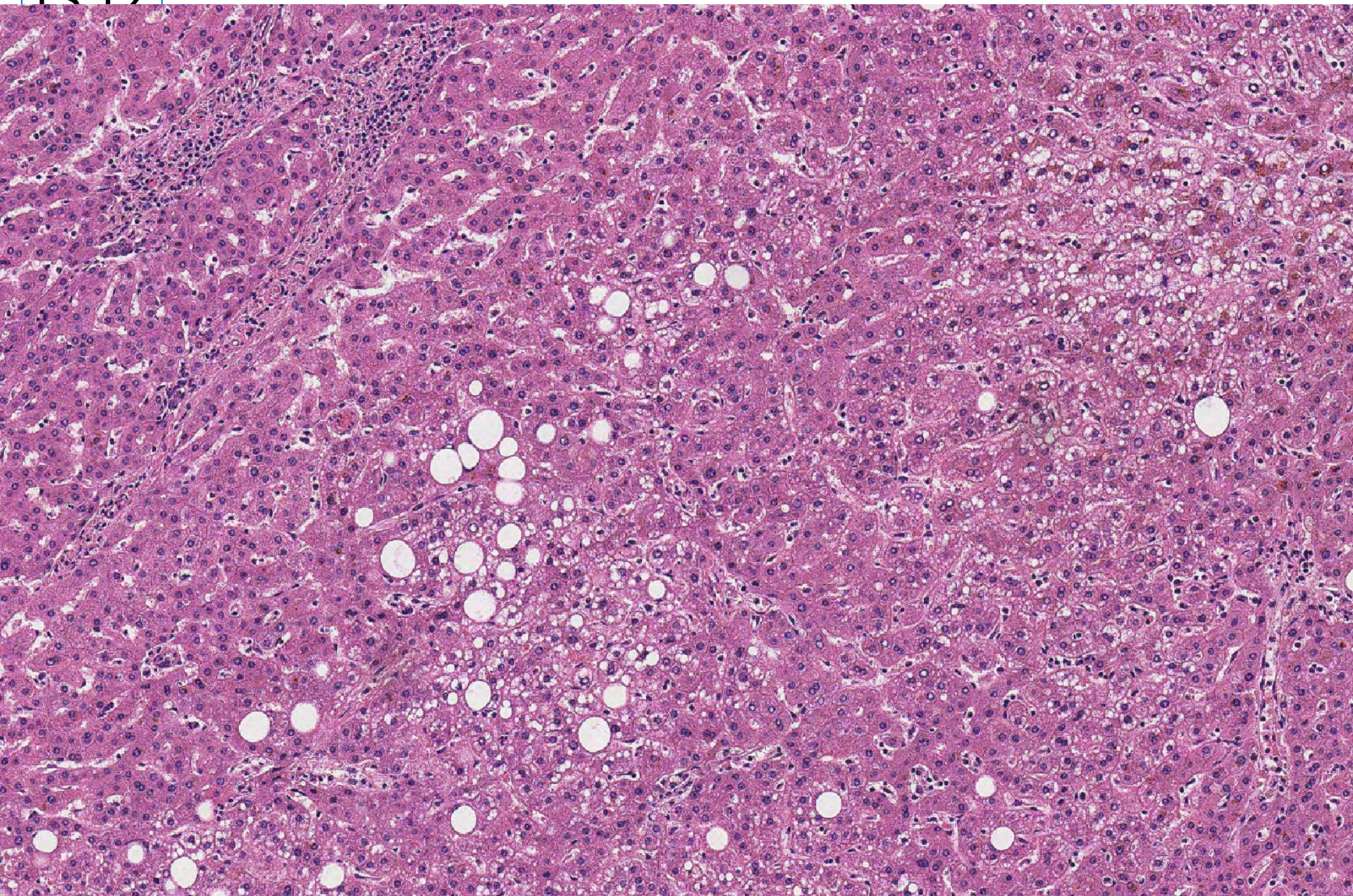


LS 12

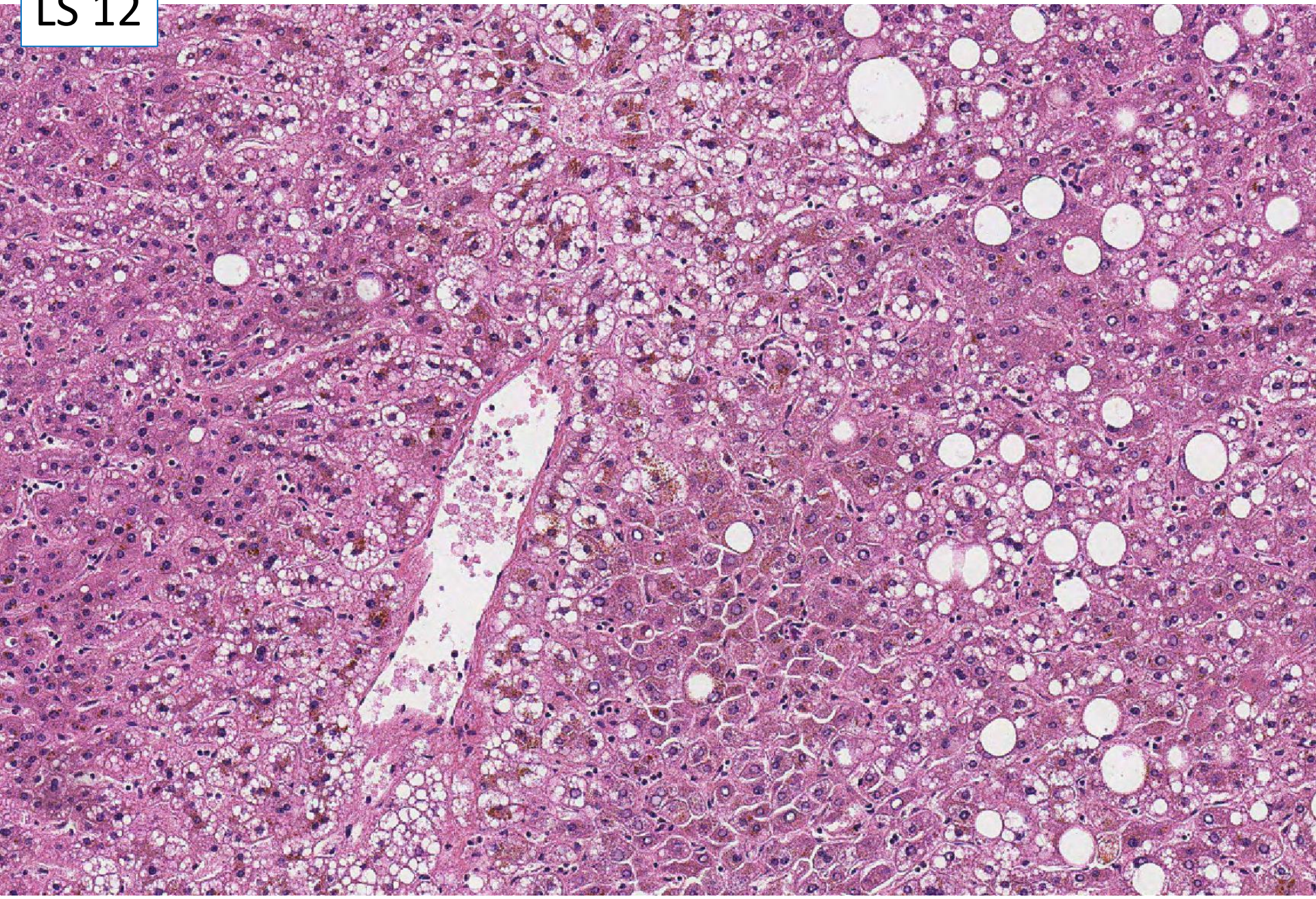




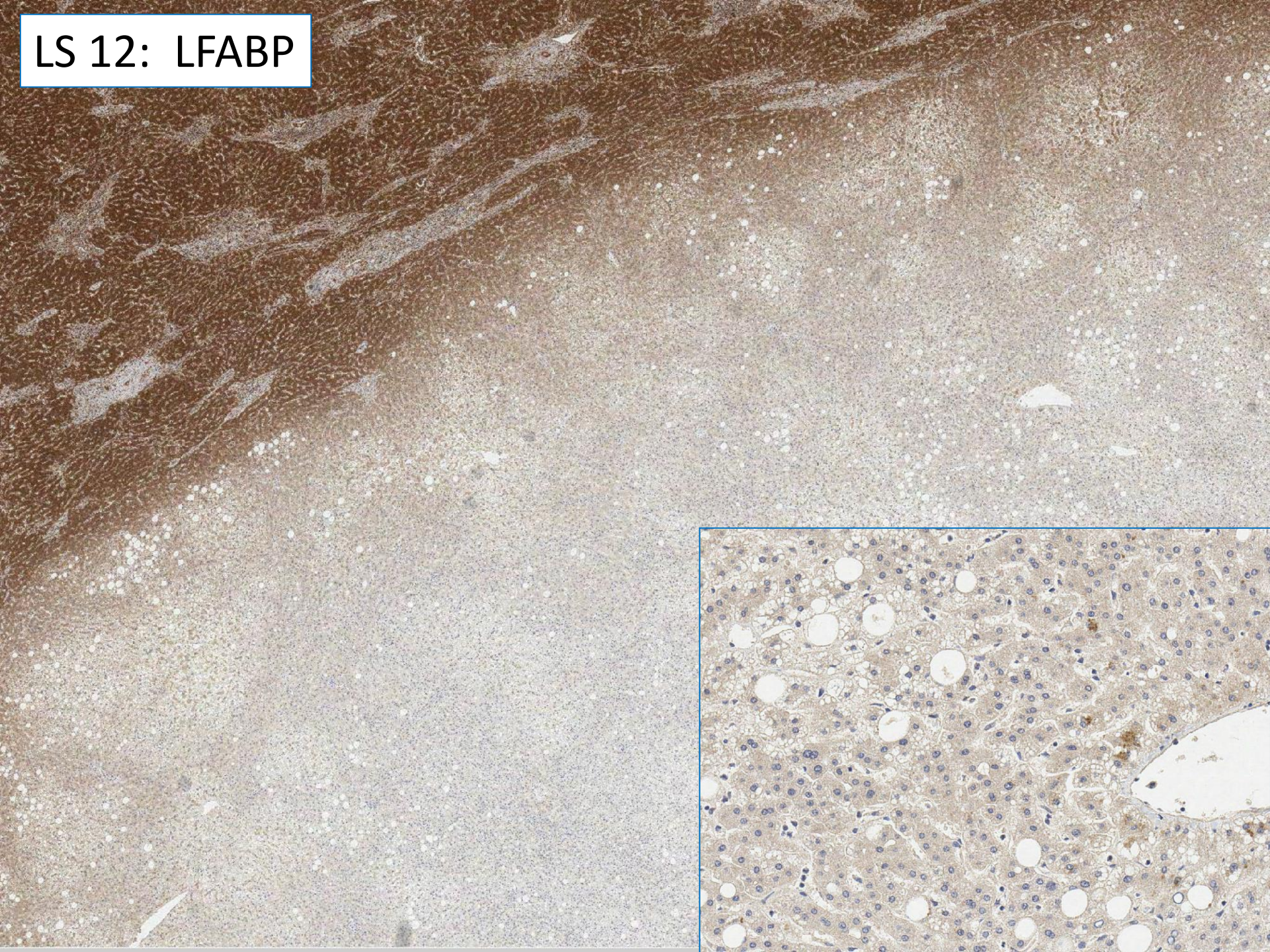
IS 12



LS 12



LS 12: LFABP



Case LS12 37 M

OLT for PSC

Explant liver - non nodular liver with a focal lesion in segment 7/8 which is pale in colour and measures 18 x 12 x 15 mm.

| | |
|---|--|
| A | Hepatocellular adenoma NOS |
| B | Hepatocellular adenoma, HNF1a inactivated type |
| C | Focal fatty change |
| D | Well differentiated hepatocellular carcinoma |
| E | Macroregenerative nodule. |